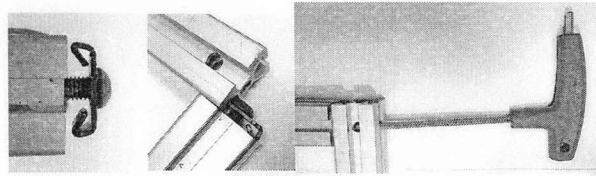
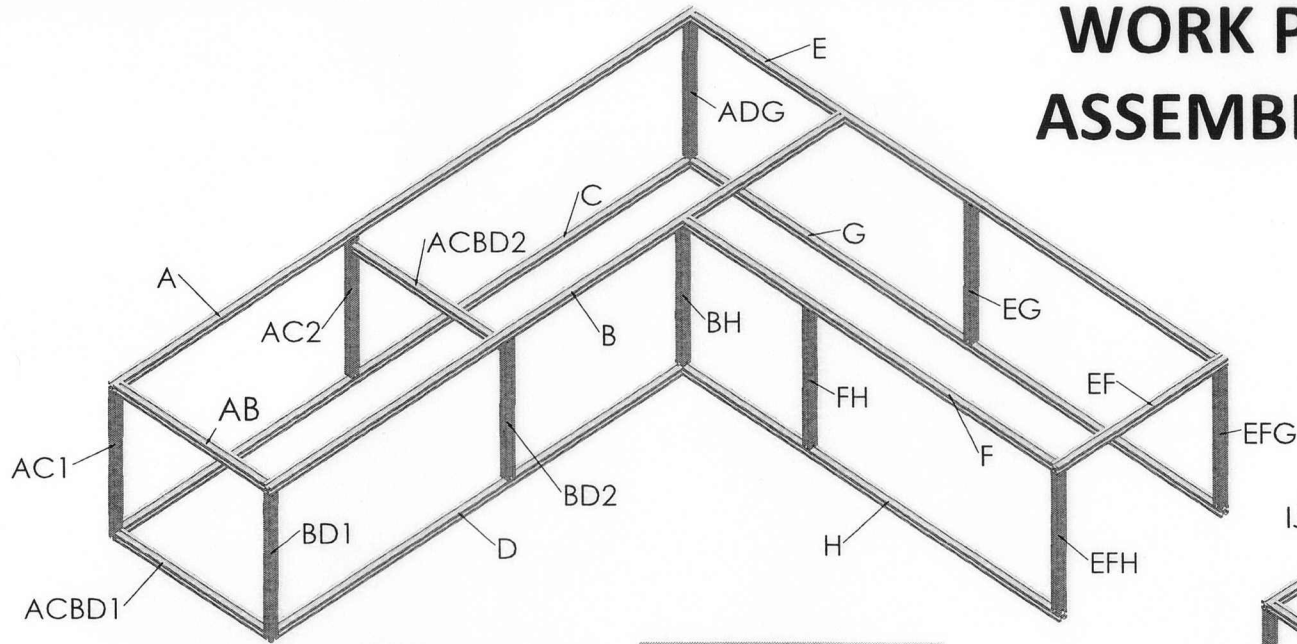
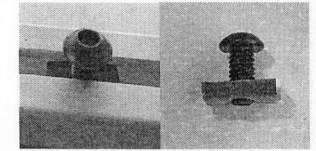


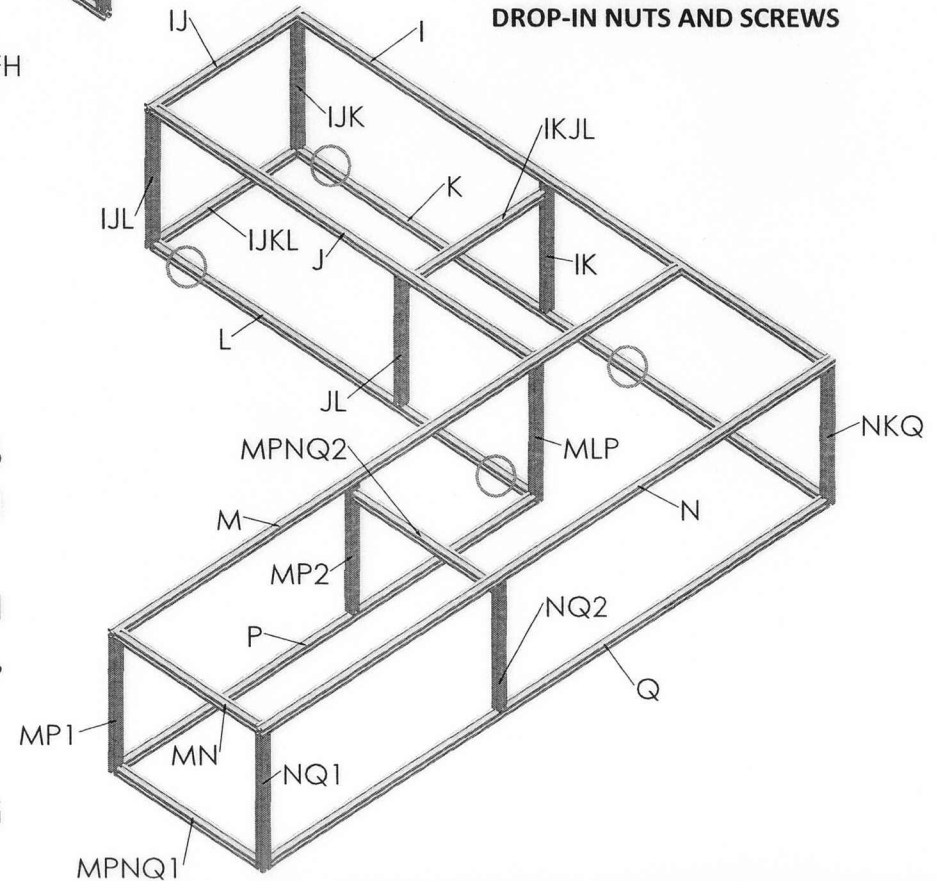
# WORK PLATFORM FRAME ASSEMBLING INSTRUCTION



**DETAIL 1**  
EXTRUSION FASTENERS



**DETAIL 2**  
DROP-IN NUTS AND SCREWS



## READ THIS FIRST:

1. PLEASE VIEW DETAIL 1 FOR EXTRUSION FASTENERS INSTALLING INSTRUCTION. USE T-HANDLE ALLEN WRENCH FOR TIGHTENING.
2. BEFORE INSTALLING THE TOP FRAME, PLEASE SLIDE IN THE SUPPORT EXTRUSIONS (AC2, BD2, FH, EG, JL, IK, NQ2, MP2) FIRST.
3. PLEASE INSTALL 4 DROP-IN NUTS AND SCREWS AT CIRCLED LOCATIONS FOR FEMALE AND MALE SIDES SLIDING GUIDANCE, DROP-IN ASSEMBLY SHOWN AS DETAIL 2.