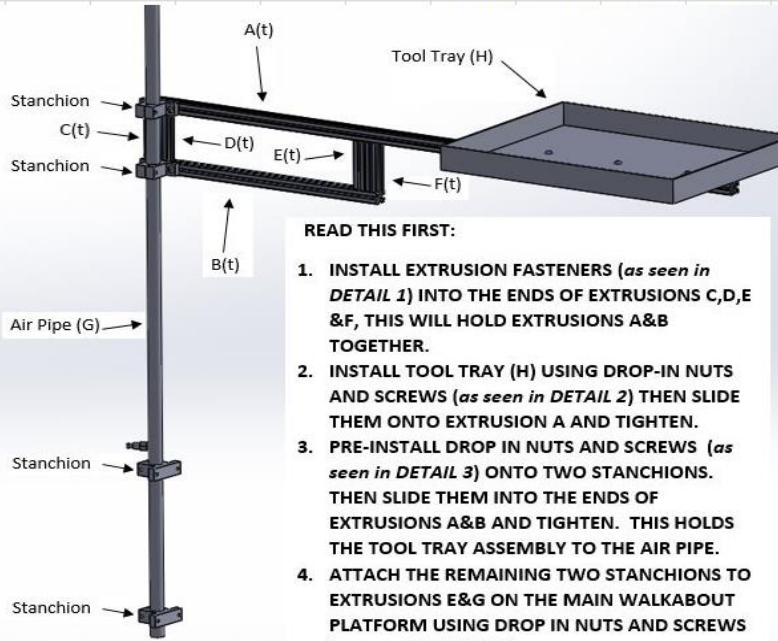


TOOL TRAY ASSEMBLY INSTRUCTIONS



READ THIS FIRST:

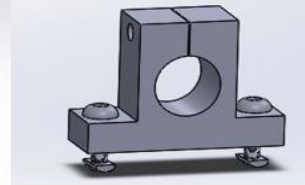
1. INSTALL EXTRUSION FASTENERS (*as seen in DETAIL 1*) INTO THE ENDS OF EXTRUSIONS C,D,E & F, THIS WILL HOLD EXTRUSIONS A&B TOGETHER.
2. INSTALL TOOL TRAY (H) USING DROP-IN NUTS AND SCREWS (*as seen in DETAIL 2*) THEN SLIDE THEM ONTO EXTRUSION A AND TIGHTEN.
3. PRE-INSTALL DROP IN NUTS AND SCREWS (*as seen in DETAIL 3*) ONTO TWO STANCHIONS. THEN SLIDE THEM INTO THE ENDS OF EXTRUSIONS A&B AND TIGHTEN. THIS HOLDS THE TOOL TRAY ASSEMBLY TO THE AIR PIPE.
4. ATTACH THE REMAINING TWO STANCHIONS TO EXTRUSIONS E&G ON THE MAIN WALKABOUT PLATFORM USING DROP IN NUTS AND SCREWS (*as seen in DETAIL 3*)



DETAIL 1
EXTRUSION FASTENERS



DETAIL 2
DROP-IN NUTS AND SCREWS



DETAIL 3
STANCHION

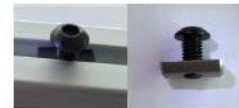
LIGHT POLE ASSEMBLY INSTRUCTIONS

READ THIS FIRST:

1. USE THE INCLUDED HARDWARE TO ATTACH THE LIGHT TO THE EXTRUSION (*as seen in DETAIL 1*).
2. INSTALL DROP-IN NUTS AND SCREWS TO THE OUTER UPPER AND LOWER EXTRUSIONS ON THE MAIN WALKABOUT PLATFORM IN LINE WITH EACH OTHER VERTICALLY. THE LIGHT FIXTURE WILL SLIDE OVER THE DROP-IN NUTS AND SCREWS (*as seen in DETAIL 2*) THIS ALLOWS YOU TO SLIDE THE LIGHT FIXTURE EXTRUSION ONTO THE PLATFORM WHERE YOU NEED IT AND TIGHTEN IN PLACE.
3. USE THE INCLUDED ZIP-TIES TO SECURE THE LIGHT ELECTRICAL CABLE TO THE LIGHT FIXTURE EXTRUSION.



DETAIL 1
LIGHT BRACKET ASSEMBLY



DETAIL 2
DROP-IN NUTS AND SCREWS